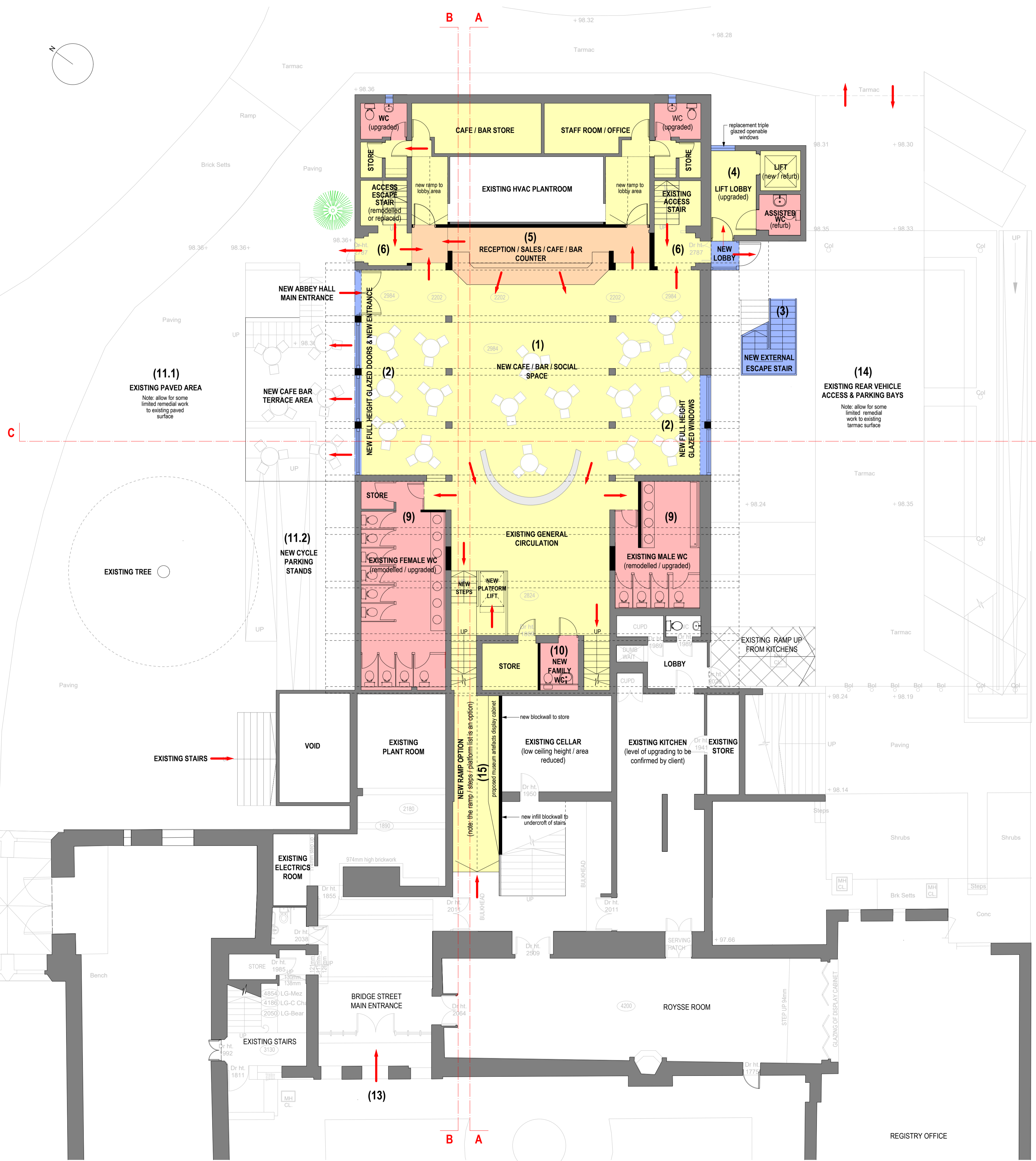


GROUND FLOOR PLAN - CORE SCHEME (1:100 @ A1)



KEY:

1. NEW CAFE / BAR / SOCIAL SPACE / PART OF FLOOR REQUIRES RAISING.
2. PART OF FRONT & REAR ELEVATION OPENED UP / FULL HEIGHT GLAZED DOORS & WINDOWS ADDED.
3. NEW EXTERNAL ESCAPE STAIR & LANDING ADDED.
4. EXISTING LOBBY / LIFT / ASSISTED WC UPGRADED.
5. NEW RECEPTION / SALES COUNTER & CAFE BAR SERVERY.
6. EXISTING INTERNAL STAIRS UPGRADED & STRUCTURALLY MODIFIED TO PROVIDE DIRECT ACCESS / ESCAPE.
9. EXISTING MALE / FEMALE WC'S REMODELLED AND UPGRADED.
10. NEW FAMILY WC.
- 11.1 EXISTING PAVED AREA - ALLOW FOR SOME LIMITED WORKS AROUND CAFE / BAR TERRACE.
- 11.2 PROVIDE NEW CYCLE STANDS.
14. EXISTING BRIDGE / RAMP COLUMNS REMOVED / EXISTING ACCESS & PARKING BAYS RETAINED.
15. OPTIONAL PROPOSED RAMP / PLATFORM LIFT / STEPS DIRECTLY LINKING THE HISTORICAL & NEW BUILDINGS.

NOTES

04	26.11.2015	small planter (previously item 11.3) omitted / new link ramp / steps / platform lift added as a possible option	DMB
03	08.11.2015	core plan - key text & notes revised, options plan - proposed internal stair / lobby area amended to external steel stair as in core plan layout	DMB
02	31.10.2015	core plan & enhanced plan revised	DMB
01	07.10.2015	blockwalls added to existing store & undercroft of stairs	DMB

REV	DATE	DESCRIPTION	DRAWN
CLIENT ABINGDON TOWN COUNCIL			
PROJECT GUILDHALL IMPROVEMENTS ABINGDON-ON-THAMES			
DRAWING TITLE GROUND FLOOR PLAN PROPOSED CORE SCHEME			
STATUS FEASIBILITY			
PROJECT No	DWG TYPE	DWG No	REV
2271	FE	200	04
SCALE	DATE	DRAWN	CHECKED
1:100@A1	NOV 2015	DMB	DL

CONTRACTOR TO CHECK SITE DIMENSIONS AND REPORT ANY VARIATIONS OR OMISSIONS TO LEWANDOWSKI ARCHITECTS. THIS DRAWING IS COPYRIGHT OF LEWANDOWSKI ARCHITECTS AND MUST NOT BE REPRODUCED OR USED WITHOUT PERMISSION. DO NOT SCALE FROM THIS DRAWING.

1st FLOOR, RAFTS COURT, BROCAS ST, ETON, SL4 6RF.
T. 01753 620700 F. 01753 620621
www.lewandowskiarchitects.com

