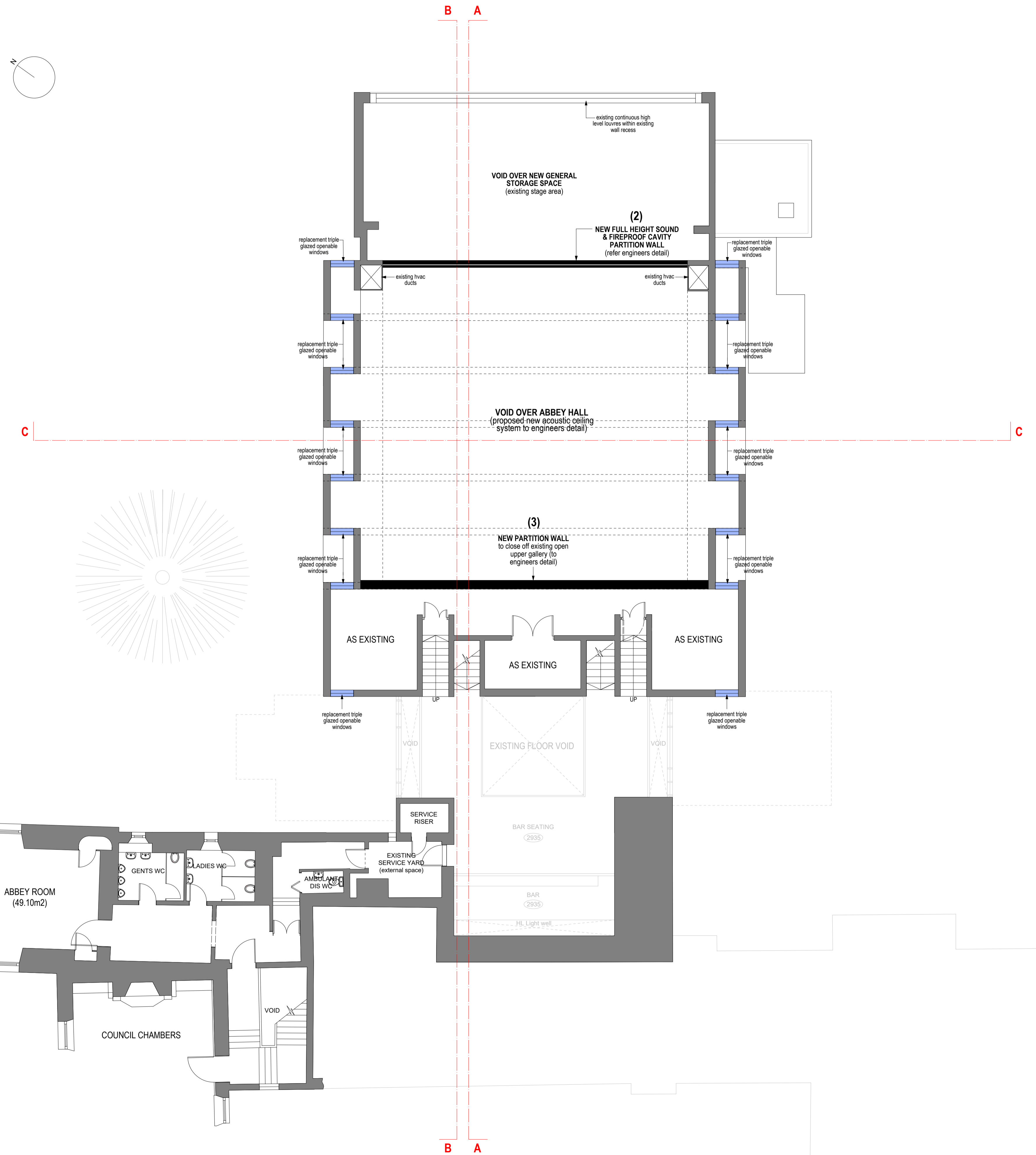


SECOND FLOOR PLAN - CORE SCHEME (1:100 @ A1)



- KEY:
- NEW FULL HEIGHT BLOCKWORK CAVITY WALL PARTITION (REFER ACOUSTIC REPORT).
 - NEW FULL HEIGHT SOUND & FIREPROOF CAVITY PARTITION WALL (REFER ENGINEERS DETAIL).
 - NEW ACOUSTIC PARTITION TO CLOSE OFF OPEN GALLERY AREA (REFER ACOUSTIC REPORT).

NOTES

04	27.11.2015	plan scale amended to 1:100	DMB
03	10.11.2015	key text amended	DMB
02	08.11.2015	core & options plan - key text & notes revised, options plan - proposed glazed internal escape stair / lobby area amended to external steel stair as in core plan	DMB
01	31.10.2015	revised core & options plans	DMB

REV	DATE	DESCRIPTION	DRAWN
CLIENT ABINGDON TOWN COUNCIL			
PROJECT ABINGDON TOWN COUNCIL GUILDHALL IMPROVEMENTS			
DRAWING TITLE SECOND FLOOR PLAN CORE & OPTIONS SCHEMES			

PROJECT No	DWG TYPE	DWG No	REV
2271	FE	202	04

SCALE	DATE	DRAWN	CHECKED
1:100@A1	NOV 2015	DMB	DL

CONTRACTOR TO CHECK SITE DIMENSIONS AND REPORT ANY VARIATIONS OR OMISSIONS TO LEWANDOWSKI ARCHITECTS. THIS DRAWING IS COPYRIGHT OF LEWANDOWSKI ARCHITECTS AND MUST NOT BE REPRODUCED OR USED WITHOUT PERMISSION. DO NOT SCALE FROM THIS DRAWING.

1st FLOOR, RAFTS COURT, BROCAS ST, ETON, SL4 6RF.
T. 01753 620700 F. 01753 620621
www.lewandowskiarchitects.com

