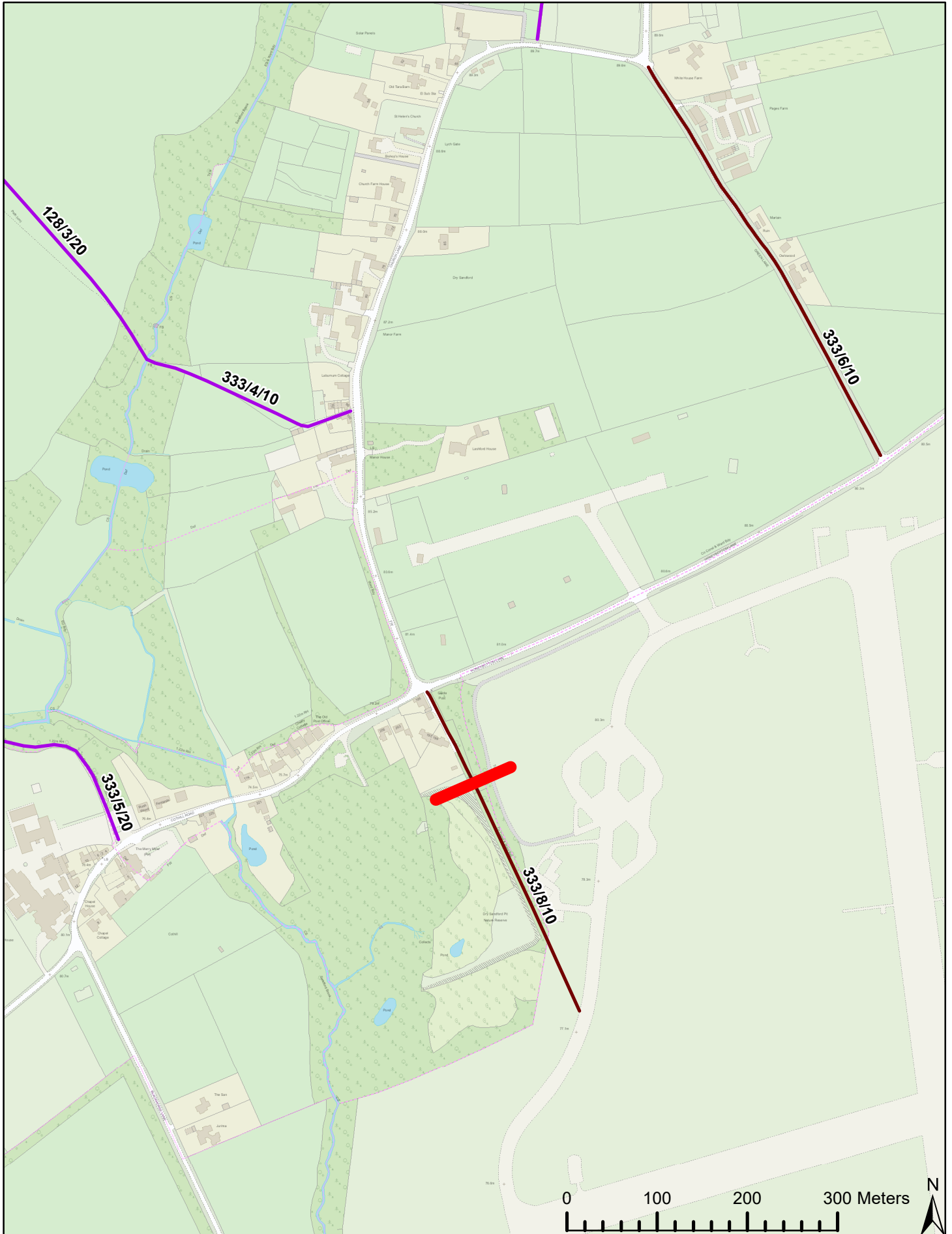


# Byway 333/8/10 closed south of red line.



**OXFORDSHIRE  
COUNTY COUNCIL**

© Crown copyright and database rights 2019 OS 100023343. You are permitted to use this data solely to enable you to respond to, or interact with, the organisation that provided you with the data. You are not permitted to copy, sub-licence, distribute or sell any of this data to third parties in any form.

Date: 22/03/2021

Scale: 1:5,469