



Schools Programme

"Thank you all so much! We had a wonderful time and the children have come away buzzing with inspiration and excitement - the MG car being one of the highlights for sure! We have been learning all about the MG factory in class.

We've been learning lots about how we can use both Primary and Secondary Sources to teach us about the past, and the children really loved being able to touch and hold some exciting Primary Sources - something that's not always easy in the classroom!"

2024-26

visit our website for opening details
www.abingdonmuseum.com



ABINGDON
COUNTY HALL
MUSEUM

Welcome to Abingdon County Hall Museum



Abingdon's history stretches back over hundreds of thousands of years, and we have a strong claim to be England's oldest continually inhabited town. A visit to our galleries will take your pupils on a journey from prehistoric times to the present day.

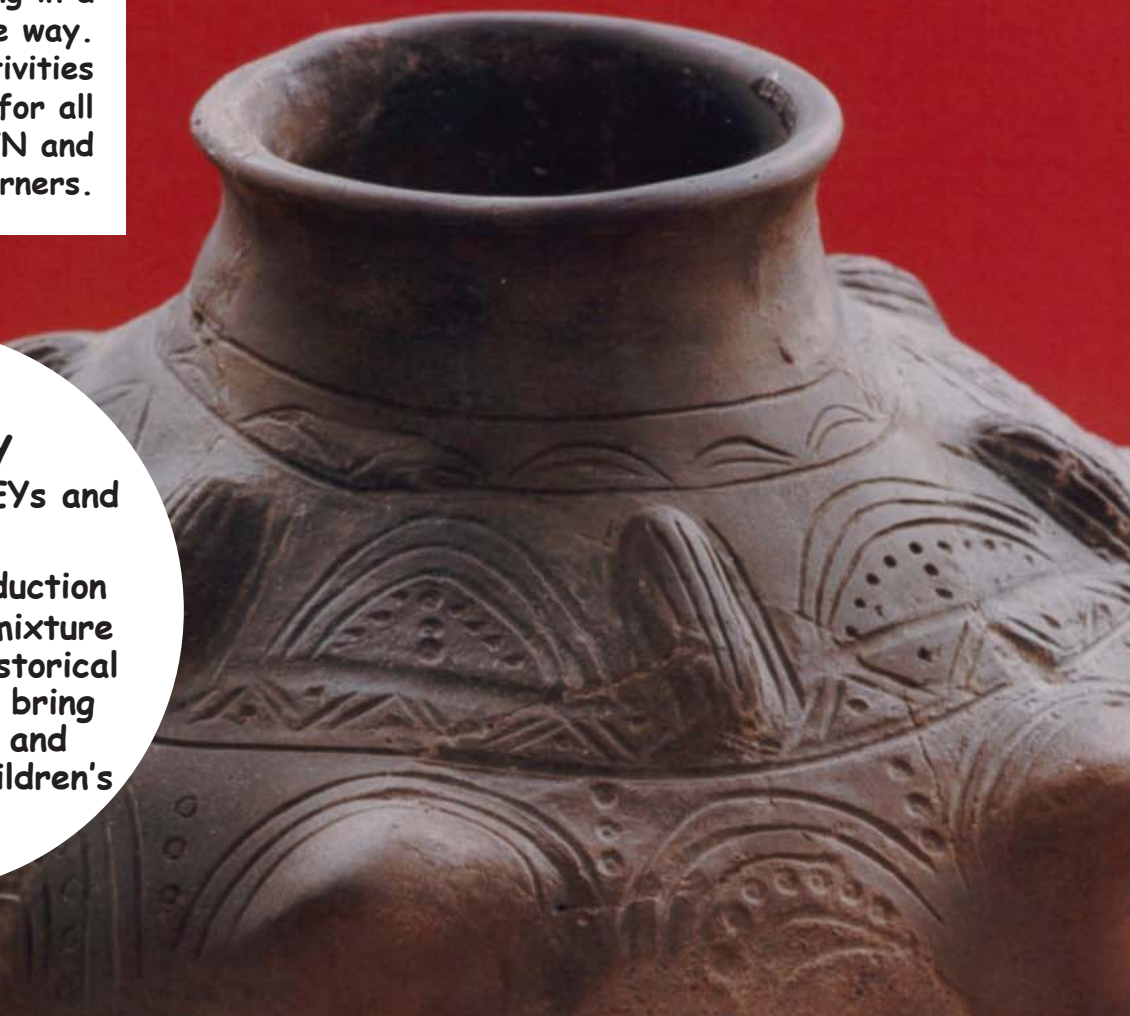
With an extensive range of artefacts for handling, costumes, and displays available we can help support learning in a creative and interactive way. Our free teacher-led activities and workshops cater for all age groups, including SEN and Foundation Stage learners.

Hats off to History

(suitable for KS1, EYs and SEND)

A wonderful introduction to history with a mixture of role play and historical artefacts to help bring the past to life and engage younger children's curiosity

Anglo-Saxon earth pot c. 850 found in Abingdon.



DID YOU KNOW?

Abingdon is one of the oldest continually inhabited towns in the UK, making it a place of cultural and historical importance

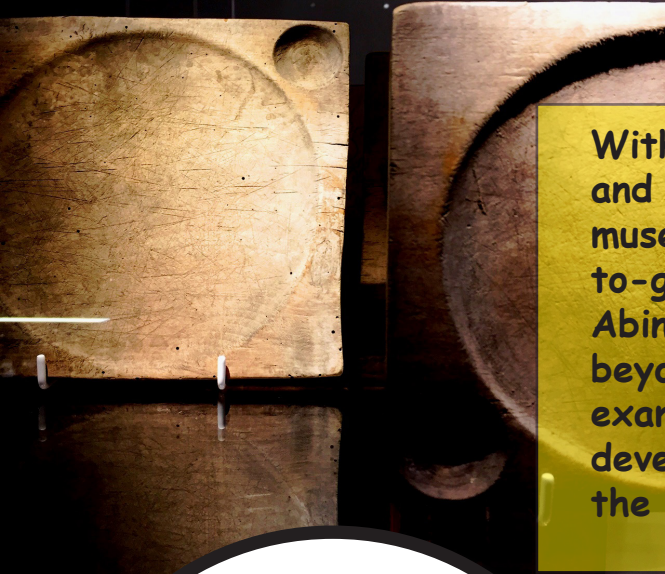


The perfect place for local history studies

Remarkable Creatures

(EYs, KS1 & KS2)

A chance to be a young archaeologist and examine ammonites, belemnites, pliosaurs and our very own ichthyosaur.



With a large and varied collection of social history and a surprising collection of natural archaeology, the museum can provide a number of tailored and 'ready-to-go' workshops that interpret the local history of Abingdon. Schools in the South Oxfordshire region and beyond can benefit from this topical diversity, for example by discovering how an ancient market town develops, through looking at Abingdon's history from the Stone Age to MG cars.

Toy Box

(suitable for KS1, EYs and SEND)


Look at our range of toys to see how toys have varied over time and enjoy trying some traditional toys and games.


Abingdon before the Abbey (KS1 & KS2)

Examine our oldest artefacts as we discover life in Abingdon from Prehistoric times through to the Stone Age, up to the Iron Age.

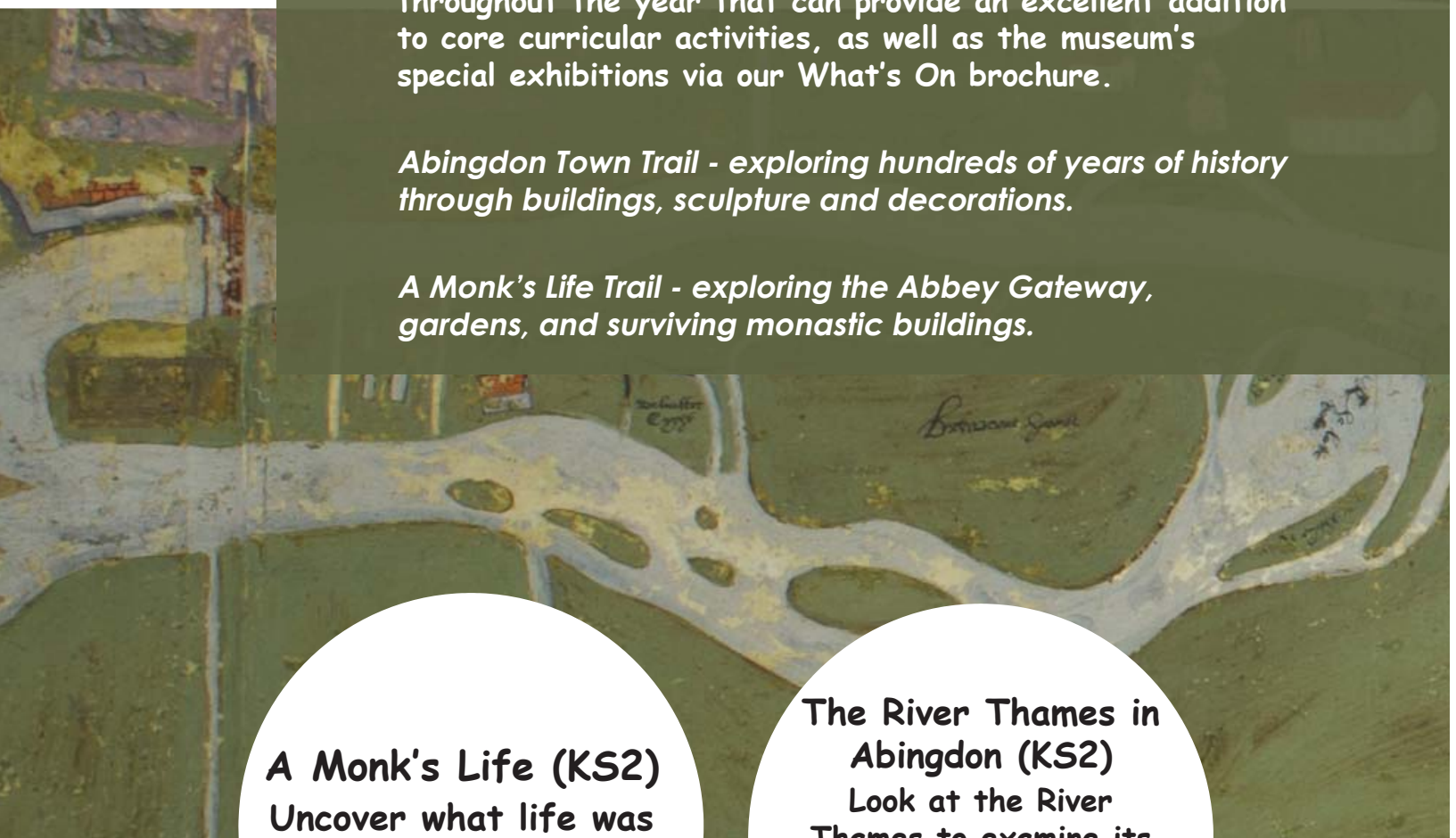
Below Stairs, Above Stairs (KS1 & KS2)

Compare how servants and householders experienced life in Victorian and Edwardian homes.



A group of children are gathered around a horse, looking at it with interest. One child in the foreground is smiling and looking towards the camera. The background shows other children and parts of the horse.

A place for adventures and discoveries

A large mural depicting a landscape with a winding river, green fields, and some buildings. The style is somewhat abstract and painterly, with visible brushstrokes.

School groups can follow self-led town trails as well as gallery trails in the County Hall. The town offers a wealth of historic buildings and sites that allow pupils to see clearly the changes in trends in buildings and monuments throughout history. Keep an eye out for special events throughout the year that can provide an excellent addition to core curricular activities, as well as the museum's special exhibitions via our What's On brochure.

Abingdon Town Trail - exploring hundreds of years of history through buildings, sculpture and decorations.

A Monk's Life Trail - exploring the Abbey Gateway, gardens, and surviving monastic buildings.

A Monk's Life (KS2)
Uncover what life was like inside a Benedictine Abbey

The River Thames in Abingdon (KS2)
Look at the River Thames to examine its historical and geographical features and how they have helped shape modern Abingdon.

Natural and Social History in abundance

The Abingdon area was the home to Mesolithic settlers, Bronze Age and Iron Age tribes, the Romans, Saxons and Normans. As such it has a long history of trade, industry, religion and also military presence. Each topic can contribute to a broader understanding of historical studies, and can assist with shaping scientific understanding, chronology, deduction skills and analytical skills.

Anglo-Saxon Abingdon (KS1 & KS2)

Join us as we journey back in time to a Thane's hall in order to find out about life and culture in Anglo-Saxon times.

Life in Roman Abingdon (KS1 & KS2)

Experience life as a Roman and handle finds from the Roman villa at Barton Court Farm.

Hands on History (KS1 & KS2)

Cover Abingdon's local history by handling objects from the Stone Age through to the present day.

DID YOU KNOW?

The County Hall was once used as an **assize** court where many of the county of Berkshire's most important criminal trials took place.

Modern history and the World Wars

Learning about home life and the locality from 100 years ago shows just how much life has changed in that time. By looking at and handling items from the past, classes will learn about continuity and change, identifying uses and reasons for objects and discovering local modern history.

Abingdon at War - WW I (KS2)

Discover how individual stories help us build a picture of life 100 years ago. A handling workshop with diary extracts, postcards, newspaper adverts and more.

Abingdon at War - WWII (KS2)

Explore how life at home changed during World War II. What was it like to be an evacuee sent here?

To book your Session please email -

Tristan.Kear@abingdon.gov.uk



DID YOU KNOW?

Abingdon County Hall was used as a book depository for the National Library between 1939-1945.

Booking and Further Information

Outreach Sessions

Whilst all schools are encouraged to visit the museum, we appreciate this is not always possible. As part of our ongoing service to local schools we can provide outreach workshops free of charge to schools in the Abingdon catchment. Outreach workshops will involve object handling, games, and images to be explored from a range of topics.

Early Years and Special Educational Needs

Many of our workshops can be tailored to suit your class, with adaptable learning outcomes and levels of interactivity. Suitable workshops include, but are not limited to the following:

Toy Box - Remarkable Creatures - Hats off to History.

We also have a number of self-guided activities such as 'I Spy' cards, dice treasure hunts and themed trails.

Booking Essentials

- All workshops and outreach sessions are free.
- Teacher-led or self-led visits available.
- Please book your visit in advance by contacting our education team on 01235 523703 or Tristan.Kear@abingdon.gov.uk
- Coat and bag hooks are available on site.
- There is no parking at the museum - school groups must arrive by coach or on foot.
- Lunches may be taken in the museum basement during periods of bad weather, however this is limited to groups of 15 or less. Please ask for information.



DID YOU KNOW?

The Romans built not only a Grand Villa near Abingdon but also a sacred temple near Marcham!

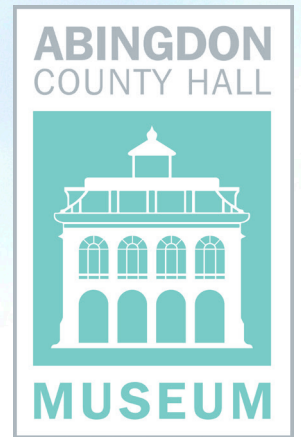
Contact us

Tristan.Kear@abingdon.gov.uk

ABINGDON COUNTY HALL MUSEUM

**Market Place,
Abingdon,
OX14 3HG**

01235 523703



FOLLOW US ON



@abingdonmuseum



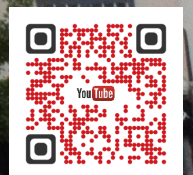
@abingdonmuseum



abingdonmuseum



/abingdonmuseum



www.abingdonmuseum.com